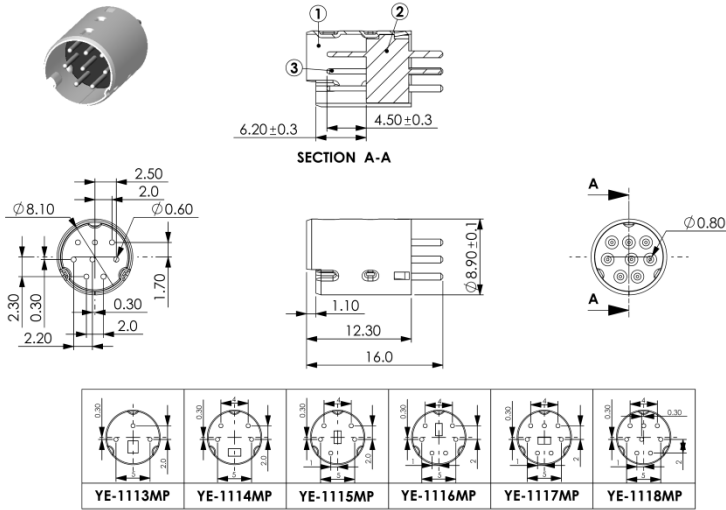


YE-111XMP MINI DIN CABLE PLUG FOR MOLDING



MATERIAL :

1. SHIELD COVER :
BRASS NICKEL PTD.
2. HOUSING :
PBT+GF15%
3. TERMINALS :
BRASS SILVER PTD.

SPECIFICATION :

Rating :

100V AC 1A /12V DC 2A max.

Contact Resistance :

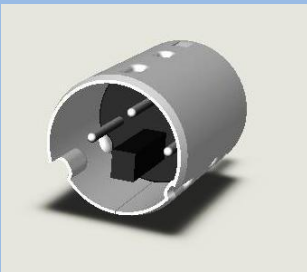
30mΩ max.

Insulation Resistance :

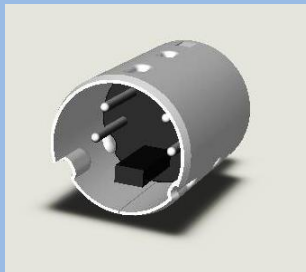
50MΩ at 250V DC min.

Voltage Withstand :

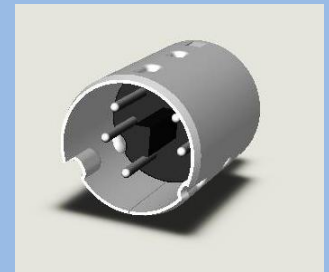
250V AC for 1 minute



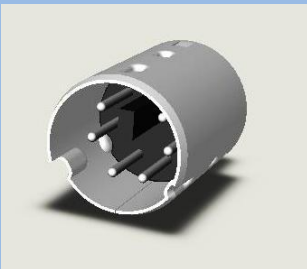
YE-1113MP



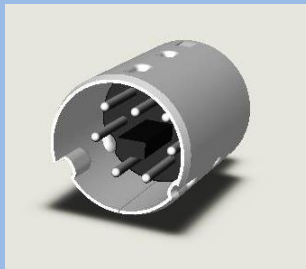
YE-1114MP



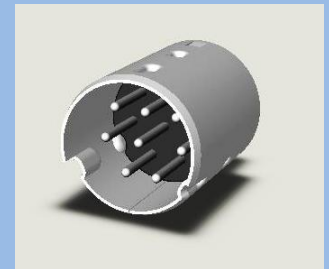
YE-1115MP



YE-1116MP



YE-1117MP



YE-1118MP